



# Summer Camps 2026

**Summer Camp Registration:**  
Resident: February 18  
Non-Resident: March 18

Town of   
**Newmarket**  
**camps**

Recreation & Culture  
[newmarket.ca/camps](https://newmarket.ca/camps)



# Mayor & Council



Members of Council at Mulock Harvest Picnic in 2019

## Message from the Mayor

Some of my earliest and favorite memories growing up are times at summer camp. Summer in Newmarket is all about adventure, learning and making memories – and our camps are the perfect way to experience it all!

This year, we're excited to share an incredible lineup of camps for ages 4 to 19. Whether your camper loves sports, science and coding, the arts, or leadership, there's a camp designed to spark their curiosity.

Newmarket camps provide a summer of fun memories and create opportunities for growth in a safe, welcoming environment. Campers will build new friendships, discover new passions, and enjoy unforgettable experiences right here in our community.

Take a look through the magazine and find a camp that inspires your child and mark your calendar for resident registration on Wednesday, February 18 at 6:30 a.m.

See you at summer camp!

Sincerely,

John Taylor  
Mayor



# Important Dates

## REGISTRATION DATES

### Resident Registration

Wednesday, February 18 at 6:30 a.m.

### Non-Resident Registration

Wednesday, March 18 at 6:30 a.m.

## Summer Camp 2026

	Mon	Tue	Wed	Thu	Fri
Week 1	29	30	1	2	3
Week 2	6	7	8	9	10
Week 3	13	14	15	16	17
Week 4	20	21	22	23	24
Week 5	27	28	29	30	31
Week 6	3	4	5	6	7
Week 7	10	11	12	13	14
Week 8	17	18	19	20	21
Week 9	24	25	26	27	28
Week 10	31	1	2	3	4

● June ● July ● August  
● September ● Holiday



# How to Register

## ONLINE

**It's easy, secure and the fastest way to register for a program!**

### What You Need:

- Xplor account login (reset via "Forgot Password" if needed).
- Visa, Mastercard, AMEX, or account credit.
- Camp ID.
- Camper Information:
- Emergency contact name & phone.
- Camper details (disabilities, accommodations, medical conditions, dietary restrictions, or allergies).

### What to do:

Log in to **newmarket.perfectmind.com**.

1. Go to the Activity tab and click Registration.
2. Use filters or enter the camp ID in the Keyword search bar, or scroll to the Summer Camps box to browse categories.
3. Select Register or Waitlist, depending on availability.
4. Complete the Camper Information Questionnaire (once per registration) with as much detail as possible.
5. Enter your payment details.
6. Print your confirmation and receipt.
7. View your activities under the Schedule section of your account.

## NON-RESIDENTS

Non-residents are subject to a 30% surcharge for each camp.

## IN-PERSON

### What You Need:

- Xplor account info.
- Payment method (cash, cheque, debit, Visa, Mastercard, AMEX, or account credit).
- Camp ID or name.
- Camper Information:
- Emergency contact name & phone.
- Camper details (disabilities, accommodations, medical conditions, dietary restrictions, or allergies).

### What to do:

Visit one of our Customer Service Kiosks\* during business hours. This registration method reduces your chances of getting into the programs of your choice as programs fill up quickly.

## REMINDERS

The date range filter is automatically set to only show camps that fall within the next 6 months. Please adjust your filter until the end of August to ensure you don't miss out on the camps running during the last 4 weeks of the summer!

If you experience trouble, call the Help Line at 905-953-5154.

Registration closes at 11:59 p.m. on the Thursday prior to the camp start date.

Due to volume of users on registration day, delays in accessing online registration may occur.

\*Customer Service Kiosks: Ray Twinney Recreation Complex, Municipal Offices, Magna Centre, Newmarket Seniors' Meeting Place, Recreation Youth Centre & Indoor Skate Park.

# Things You Should Know Before Starting Summer Camp

## CONTACT INFORMATION

### Camp Central:

905-953-5300 ext. 2825 or 2826  
camps@newmarket.ca  
Phone lines open May 11, 2026

### Inclusion & Support Services:

905-953-5300 ext. 2821  
inclusion@newmarket.ca

## CAMPER PAPERWORK

- Weekly Activity Forecasts.
- Medical Forms.
- Safe Dismissal Consent Form (submit weekly to Camp Director).
- What to Bring Checklist.
- A welcome email outlining the above will be sent the Friday prior to each camp week.

## SAFE DISMISSAL PROCEDURES

- Authorized individuals must sign campers in/out daily. **Photo ID required daily.**
- Only those on the Safe Dismissal Consent Form (SDC) can sign out campers.
- Campers under 9 should be signed out by an authorized adult.
- Written consent is required for early or self-sign-out.

## LATE FEE POLICY

- \$5.00 per 5 minutes late.
- Fees payable within 48 hours online or at a Customer Service Desk to return to camp

## ABSENT & MEDICATIONS

- Notify Camp Central if your camper will be absent or late.
- Medications (e.g., epi-pens) must be in original packaging with dosage and self-administered by the camper. Submit medical forms to the Camp Director with time of administration indicated.
- Campers requiring lifesaving medication (e.g. seizure medication, epi-pen) must bring it with them, daily, to attend camp.

## NUT-FREE POLICY

- No food that contain or may contain traces of nuts/peanuts (i.e. items from Tim Hortons), as well as soy butter
- Prohibited items will be returned at pick-up.

## CAMPER BEHAVIOUR

### Campers must:

- Respect others and follow staff instructions.
- Use kind language and keep hands to themselves.
- Stay with their group & have fun!
- Be independent in toileting & changing

Inappropriate behaviour (e.g., bullying, aggression) may result in dismissal.

Please contact Inclusion Services for support with specific needs.



# What To Bring To Camp

**Don't forget to bring these items with you to camp everyday!**



**Lunch and 2 snacks**



**Refillable water bottle**



**Sunscreen and hat**



**Comfortable clothing and running shoes**



**Extra clothes for younger campers**



**Camp-specific items as outlined in the Camp Description and Welcome Email**

Do not bring valuables, electronics, toys, or money. The Town is not responsible for lost or damaged items.





# Refund Policy

## CAN NO LONGER PARTICIPATE IN A SUMMER CAMP?

Withdrawals can be done 7 or more days prior to the start of the camp either online at [newmarket.perfectmind.com](https://newmarket.perfectmind.com) or through our online form.

### Cancellation Options

7 or more days prior to the start of the camp

6 or less days prior to the start of the camp

After camp has ended

### Refund Policy

Full refund

No refund or credit, unless medical documentation is provided

No refund or credit

## REFUND ONLINE FORM

If you need to withdraw 6 days or less prior to the start date due to a medical reason, please fill out the online form and provide medical documentation.

[REFUND FORM](#)

## HOW TO WITHDRAW ONLINE

1. Visit [newmarket.perfectmind.com](https://newmarket.perfectmind.com) and login with your email address and password
2. Click on the client you are looking to withdraw and scroll down to 'Schedules'
3. Click to 'Switch List View', then find the program you are looking to withdraw from
4. Click on 'Actions'
5. Select 'Withdraw'

# Refund Policy

## FAQ'S

**Q: Will I receive a full refund for a medical reason?**

A: You may withdraw at any time with medical documentation. All refunds/credits will be prorated.

**Q: Will a refund request be considered after camp has ended?**

A: Unfortunately, requests submitted after the camp has ended will not be considered.

**Q: Will a refund be issued if my child misses a day of camp?**

A: In the event that you are unable to attend camp, a refund or credit will not be provided unless medical documentation is provided.

**Q: My camp was cancelled – will I receive a refund?**

A: Yes, you will receive a full credit or refund back to your account within 5-10 business days.

**Q: The camp has already started – am I too late to register my child?**

A: Registration closes at 11:59 p.m. the Thursday before each week of camp. Please contact Camp Central to complete a late registration. Please note, not all camps allow late registrations.

**Q: How can I contact Camp Central?**

A: The email is [camps@newmarket.ca](mailto:camps@newmarket.ca). Camp Central can also be reached at 905-953-5300 ext. 2825 or 2826.

**Q: When is the last day to withdraw with a full refund?**

A: Please refer to the chart below!

## WITHDRAWAL CALENDAR

CAMP WEEK	LAST DAY TO WITHDRAW	REGISTRATION END DATE
June 29 – July 3	Monday, June 22	Thursday, June 25
July 6 – 10	Monday, June 29	Thursday, July 2
Jul 13 – 17	Monday, July 6	Thursday, July 9
July 20 – 24	Monday, July 13	Thursday, July 16
July 27 – 31	Monday, July 20	Thursday, July 23
August 4 – 7	Monday, July 27	Thursday, July 30
August 10 – 14	Tuesday, August 4	Thursday, August 6
August 17 – 21	Monday, August 10	Thursday, August 13
August 24 – 28	Monday, August 17	Thursday, August 20
August 31 – September 4	Monday, August 24	Thursday, August 27



# Our Vibrant Staff

## CAMP STAFF INFORMATION



The Town of Newmarket Camp staff are chosen for their passion for working with children, creativity, enthusiasm and leadership skills.

### Qualifications:

- Standard First Aid and CPR-C
- High Five Principles of Healthy Childhood Development
- Safeguard
- Police Vulnerable Sector Check
- Training in behaviour management, program planning, customer service, inclusion and so much more!

### Camp Directors & Inclusion Facilitators receive additional training in:

- Non-Violent Crisis Intervention

## HEAR FROM OUR SUMMER 2025 CAMP PARENTS/ GUARDIANS!

“Everyone was always so happy, welcoming and helpful at every camp we went to! The staff were positive and engaging - I will definitely be signing my child up next year!”

“The Inclusion Facilitators were very accommodating! I have two campers with disabilities and very different needs, and they both had a great time!”

“My kids came home with an array of new skills and friends. They didn’t want to leave each day which says it all! Thank you Town of Newmarket for creating such a safe space for my kids to learn and grow.”

“My son is pretty shy but came home every day super excited to tell us about all the activities he did at camp! Thank you to the staff for building those connections with him and helping him make new friends!”

“Such smart, caring, fun and responsible staff in Town of Newmarket Camps. Everything you could hope for when looking for someone to trust with your children for the day!”

# Staff Spotlight

## MEET LEAH! INCLUSION FACILITATOR, SUMMER 2025



Leah has worked multiple positions with the Town of Newmarket over the past 5 years, starting as an Inclusion Counsellor in Training and working her way up to a Float Director. Throughout these years, she has also worked as a Program Instructor, RYC Kiosk Receptionist and Events Assistant, while beginning her studies in Speech Language Pathology.

She brings a genuine passion for working with children and youth to work each day, while ensuring every camper feels a sense of safety and belonging. This shows in the creative and inclusive programming she brings to the community!

Leah's commitment, leadership and positive attitude always shines through, creating memorable experiences for campers in her care.



# Camp Locations

## **Armitage Village Public School**

125 Savage Road | AVPS

## **Clearmeadow Public School**

200 Clearmeadow Blvd | CLPS

## **Crossland Public School**

255 Brimson Dr | CRPS

## **Elman W Campbell Museum**

134 Main St S | EWCM

## **Magna Centre**

800 Mulock Drive | MC

## **Newmarket Community Centre & Lions Hall**

200 Doug Duncan Drive | CCLH

## **Newmarket Soccer Club**

621 Newpark Blvd | NSC

## **NewRoads Performing Arts Centre**

505 Pickering Crescent, | NRPAC

## **Old Town Hall**

460 Botsford St | OTH

## **Ray Twinney Recreation Complex**

100 Eagle Street West | RTRC

## **Recreation Youth Centre & Indoor Skate Park**

56 Charles Street | RYC

## **Stuart Scott Public School**

247 Lorne Ave | SSPS

## **Terry Fox Public School**

161 Sawmill Valley Dr | TFPS





# Extended Care



Regular camp hours are 9 a.m. to 4 p.m. **Sign in will begin at 9:00 a.m.** and all campers must be signed out by 4:00 p.m. to avoid a late fee. Extended Care is available at an additional cost for campers 4 to 12 years old who need care before and/or after these hours

## Extended Care Locations And Hours

The Town of Newmarket has 5 Extended Care locations! Please see the camp description for details on if and where Extended Care is available for your camp, as Extended Care is not available at all camp locations. Campers must first be registered in a full day camp in order to access Extended Care services (if applicable).

Location	Address	Hours
Community Centre & Lions Hall	200 Doug Duncan Drive	7:30 to 9 a.m. & 4 to 5:30 p.m.
Ray Twinney Recreation Complex (RTRC)	100 Eagle Street West	
Magna Centre (MC)	800 Mulock Drive	
Recreation Youth Centre and Indoor Skate Park (RYC)	56 Charles Street	
Stuart Scott Public School (SSPS)	247 Lorne Avenue	

# Extended Care

## HOW TO REGISTER

1. Start by registering for the camp of your choice!
2. Check the camp description to confirm the Extended Care location of your camp.
3. If Extended Care is available for your camp, use the course codes below to register for the appropriate Extended Care course.
4. Please note, if you need morning and evening Extended Care, you will need to register for both courses, separately.

### AM Extended Care (morning)

Week	RTRC	MC	CCLH	RYC	SSPS
June 29 – July 3	78168	78203	78402	78444	
July 6 – 10	78170	78205	78403	78446	78469
Jul 13 – 17	78172	78208	78404	78447	78470
July 20 – 24	78173	78211	78405	78448	78471
July 27 – 31	78174	78212	78406	78449	78472
August 4 – 7	78175	78215	78407	78450	78473
August 10 – 14	78176	78216	78408	78451	78474
August 17 – 21	78177	78219	78409	78452	78475
August 24 – 28	78179	78223	78410	78453	
August 31 – September 4	78180			78454	

### PM Extended Care (afternoon)

Week	RTRC	MC	CCLH	RYC	SSPS
July 2 – 4	78181	78231	78435	78455	
July 7 – 11	78182	78234	78436	78456	78476
July 14 – 18	78183	78236	78437	78457	78477
July 21 – 25	78188	78239	78438	78458	78478
July 28 – August 1	78191	78395	78439	78459	78479
August 5 – 8	78192	78396	78440	78460	78480
August 11 – 15	78193	78397	78441	78461	78481
August 18 – 22	78194	78398	78442	78462	78482
August 25 – 29	78195	78399	78443	78463	
August 31 – September 4	78196			78464	

# Inclusion & Support Services



The Town of Newmarket is dedicated to ensuring all campers have a successful camp experience. There are times when a child requires more support than our program ratios are able to provide. In these cases, we strongly recommend consulting with us about our support options and adapted camps.

## How do I know if additional support is required?

### Additional support is required if:

- Extra support is required at school
- A disability exists that could affect the safety of the participant or other participants
- Extra support is required at home for basic care (i.e. toileting, changing, mobility, feeding)
- Participant is associated with a support agency and/or program
- Participant has a safety plan with their educational institution
- There are behaviours to be managed (ie. biting, scratching, pinching, eloping, etc.)

Families are required to complete an All About Me Package, and in some cases provide any existing safety plans to help camp staff with program adaptations and overall success. When considering a recreation experience, please consider the individual's needs, and that the recreation integrated setting may not be suitable for all persons. Health and Safety of participants and staff is paramount, which could result in participants being denied access to the program.

## Adapted Camps

Adapted Camps are specifically designed programs for campers with disabilities and unique needs. These programs will feature smaller group sizes, smaller staff ratios (1:3 staff to participants), a sensory aware environment, and more targeted and individualized programming activities. Please see the “Adapted” section of this guide for more information on our adapted preschool, children & youth Camps!

## Inclusion 1:1 Support

The Town of Newmarket provides Inclusion 1:1 Support to campers with disabilities and unique needs at no additional cost to families (camp fees still apply) in order for them to be integrated and successfully participate in camps. Support is not guaranteed and is offered on a first-come first-serve basis. Families are required to register into the corresponding “Inclusion 1:1 Support Request” Code to request a 1:1 Support Staff (see below for weekly codes). Prior to the camp season, the Recreation Programmer will contact families directly to confirm their staff support.

Please Note: There may be cases when we may ask an individual be paired with a support person if we deem necessary based on safety concerns for the individual, camp group, and/or Town of Newmarket Staff.



# Inclusion & Support Services



**There are so many ways to play!**

## INTEGRATED

**Inclusion-trained, Town of Newmarket staff will be present to:**

- Provide 1:1 support in mainstream camp of up to 40 other campers
- Adapt daily activities to suit the camper's needs
- Provide emotional and social support
- Manage behaviours through verbal and visual prompting
- Assist with basic care (i.e. toileting, changing, mobility, feeding, etc.)

## ADAPTED

- Specifically designed camp for children and youth with disabilities and unique needs
- Modified ratios (1:3)
- Smaller group sizes with a maximum of 10 campers
- Sensory aware & quieter environment
- Targeted activities to support different abilities, interests and learning styles
- Focus on building independence, confidence and social connections in a safe setting

**Please refer to the next page on how to request 1:1 Support.**

**Please refer to page 41 for more information on our Adapted Camps.**

*\*A camper's level of support is individually determined in collaboration with families, with final decisions made by Town of Newmarket staff to ensure a safe and positive camp experience.*

# Inclusion & Support Services



Visit the “Adapted Camps” Section on page 41 for more information!

## Inclusion 1:1 Support Request

Inclusion 1:1 Support is a service (not a camp) that is offered to campers with disabilities and unique needs in order to participate fully and successfully in camps. By registering in this service, you are requesting a Town of Newmarket Inclusion Facilitator to work 1:1 with your camper with a disability. Please register into the weeks of 1:1 support that correspond to the child’s registered camp. Please note, this is only a request process. A camper’s Inclusion 1:1 Support Staff will be confirmed by the Town of Newmarket Inclusion team.

**Ages: 4+ | Location: Corresponding Camp Location | Fee: No Charge**

Inclusion 1:1 Support Week	Dates	Code
Inclusion 1:1 Support Request – Week 1	June 29 - July 3*	79827
Inclusion 1:1 Support Request – Week 2	July 6 - 10*	79830
Inclusion 1:1 Support Request – Week 3	July 13 - 17	79833
Inclusion 1:1 Support Request – Week 4	July 20 - 24	79836
Inclusion 1:1 Support Request – Week 5	July 27 - 31	79838
Inclusion 1:1 Support Request – Week 6	Aug 4 - 7*	79839
Inclusion 1:1 Support Request – Week 7	Aug 10 - 14	79840
Inclusion 1:1 Support Request – Week 8	Aug 17 - 21	79841
Inclusion 1:1 Support Request – Week 9	Aug 24 - 29	79842
Inclusion 1:1 Support Request – Week 10	Aug 31 - Sept 4	79843

\*4 Day Week

## Can I provide my own inclusion support?

Yes, families may provide their own support (family member, friend, trained support worker or social worker). A Vulnerable Sector Screening and a signed release of liability form is required prior to entering the camp space. The support worker is required to participate in all activities as a positive role model for the participants and adhere to Town of Newmarket Policies and Procedures.

**If you require further assistance or would like more information on support options, please contact the Recreation Programmer – Inclusion & Support Services at 905-953-5300 ext. 2821 or [inclusion@newmarket.ca](mailto:inclusion@newmarket.ca)**

# Kids on the Move



Enjoy a half day of camp **FREE!**

## Daily Camp Drop-In

**Terry Fox Public School**  
(161 Sawmill Valley Dr)

**Ages: 4 to 12**  
**9 a.m. to 12 p.m. daily**  
**1 to 4 p.m. daily**

Dates	
July 6 to 10	August 4 to 7
Jul 13 to 17	August 10 to 14
July 20 to 24	August 17 to 21
July 27 to 31	

This daily drop-in program gives children an opportunity to engage and socialize in a safe and friendly atmosphere. Staff will lead small groups through a variety of games, sports, arts and crafts, and outdoor activities which are designed for participants to have fun. Participants should bring a water bottle, hat, sun protection, and close toed shoes. In the case of inclement weather or extreme heat, the program will move indoors to Terry Fox Public School’s gymnasium.

### Pre-registration is not available

Please note: Maximum 25 participants per session. **This program will operate on a first-come first-serve basis - only walk-ins permitted.** Drop-ins will no longer be accepted after 9:30 a.m. for the morning session or 1:30 p.m. for the afternoon session.

All participants must fill out our Kids on the Move Participant Information Form. This form only needs to be filled out once for the entire summer! If you are unable to print the form out beforehand, a blank form will be provided to you on-site. Our Kids on the Move Participant Information Form can be found and downloaded here: [newmarket.ca/camps](http://newmarket.ca/camps)

[newmarket.ca/camps](http://newmarket.ca/camps)



# Summer Camp Index



**General**



**Specialty**



**Sports**



**Leadership**



**Adapted**

# General Camps

## CAMP NEWLAKA

Ages 5 – 7 Years

### 📍 Community Centre & Lions Hall

Welcome to Camp Newlaka – the ultimate adventure for those looking to explore and learn about nature and the great outdoors! Campers will dive into a world of exploration and discovery, as they embark on daily excursions along the Tom Taylor Trail and Fairy Lake. Each day brings a new adventure – from searching for bugs and flowers, learning about different forest animals, scavenger hunts, nature arts & crafts, gardening and outdoor camp games, which are designed for participants to have fun. Campers will also enjoy Community Centre & Lions Hall's splash pad three times each week, and a special guest once a week. Don't forget your sunscreen and hat, as majority of the day will be spent outdoors!

**5 Day Resident Fee \$200**

**4 Day Resident Fee: \$161**

♥ Extended Care available at CCLH

## CAMP QUEST

Ages 8 – 12 Years

### 📍 Recreation Youth Centre & Indoor Skate Park

Seeking a week packed with adventure, friends and nonstop fun? Camp Quest is calling! With action-filled games, creative crafts, camp songs and team challenges, this camp does it all and offers something for everyone. Get ready for three recreational swims, two special guests and rock climbing each week. Campers will also enjoy weekly visits to the Newmarket Public Library and private access to the Recreation Youth Centre lobby games, including shuffleboard, skeeball, air hockey and more! This ultimate adventure will end with an unforgettable themed event to wrap up the week.

**5 Day Resident Fee \$205**

**4 Day Resident Fee: \$165**

♥ Extended Care available at RYC



## KIDS PLACE CAMP JR

Ages 6 – 8 Years

### 📍 Ray Twinney Recreation Complex

Seeking a week of adventure and fun? Then Kids Place Camp is for you! With exciting games, crafts, songs, outdoor play and team challenges, this camp does it all and offers something for everyone. Campers will swim three times a week, enjoy two special guests, a local trip, and end the week with a themed event.

**5 Day Resident Fee \$205**

**4 Day Resident Fee: \$165**

♥ Extended Care available at RTRC

## KIDS PLACE CAMP MINI

Ages 4 – 5 Years

### 📍 Ray Twinney Recreation Complex

Seeking a week of adventure and fun? Then Kids Place Camp is for you! With exciting games, crafts, songs, outdoor play and team challenges, this camp does it all and offers something for everyone. Campers will participate in three water days, enjoy a special guest, and end the week with a themed event.

**5 Day Resident Fee \$200**

**4 Day Resident Fee: \$161**

♥ Extended Care available at RTRC



**Click here to  
register online**

**Camps Index**

## MINI ADVENTURES: LITTLE BUILDERS

Ages 4 – 6 Years

📍 **Terry Fox Public School**

Put on your construction hats and get ready to build! Through teamwork and creativity, campers will have the chance to bring their imagination to life through building challenges and interactive experiments. Each day is filled with STEM activities, building-based crafts, camp games and outdoor play. Campers will also enjoy three water days, a special guest and a themed event to end the week. We can't wait to see what you create!

**Resident Fee: \$200**

♥ No Extended Care available

## MINI ADVENTURES: MAGIC IN ME

Ages 4 – 6 Years

📍 **Terry Fox Public School**

Wizards, fairies and princesses, oh my! The magic of classic fairy tales and mythical creatures comes to life in this whimsical camp! Campers will embark on an imaginative journey filled with captivating story times, crafts, songs, camp games and outdoor play. Each week will also bring three water days, a magical special guest and a themed event.

**Resident Fee: \$200**

♥ No Extended Care available

## MINI ADVENTURES: MISSION IMPOSSIBLE

Ages 4 – 6 Years

📍 **Terry Fox Public School**

Get your magnifying glasses ready for this one! Our youngest agents will take on the thrilling adventure of secret missions and mysterious clues, just like a spy would! Mission Impossible brings active camp games, scavenger hunts, crafts, obstacle courses and outdoor play. Plus, campers will enjoy three water days, a special guest and a themed event to end the week.

**Resident Fee: \$200**

♥ No Extended Care available

## MINI ADVENTURES: OUT OF THIS WORLD

Ages 4 – 6 Years

📍 **Terry Fox Public School**

3, 2, 1...BLAST OFF! Young astronauts will be launched into a galaxy of space-themed camp activities. This action-packed week is filled with scavenger hunts, obstacle courses, active games, outdoor play, team building challenges, crafts and engaging lessons focused on outer space. Campers will enjoy three water days, a special guest and a themed event to end the week.

**Resident Fee: \$200**

♥ No Extended Care available

## MINI ADVENTURES: SAFARI EXPLORERS

Ages 4 – 6 Years

📍 **Terry Fox Public School**

Get ready for an adventure into the wild! Safari Explorers is the perfect adventure for our youngest animal lovers. Each day brings outdoor exploration, scavenger hunts, animal and nature themed crafts, camp games and engaging lessons focused on different animals. Campers will enjoy three water days and a themed event to end the week. The highlight will be our special guest, where campers will interact with real animals up close!

**Resident Fee: \$200**

♥ No Extended Care available



**Click here to  
register online**

**Camps Index**



## MINI ADVENTURES: SUPERHERO ACADEMY

Ages 4 – 6 Years

📍 **Terry Fox Public School**

Calling all superheroes! Welcome to Superhero Academy, where young heroes discover their superpowers! This action-packed week brings imaginative play, active games, obstacle courses, team building activities, crafts, and outdoor play. Campers will enjoy three water days, a powerful special guest and a themed event to end the week.

**Resident Fee: \$200**

♥ **No Extended Care available**

## OUTDOOR RANGERS

Ages 7 – 10 Years

📍 **Community Centre & Lions Hall**

Welcome to Outdoor Rangers – the ultimate adventure for those looking to explore and learn about nature and the great outdoors! Campers will dive into a world of exploration and discovery, as they embark on daily excursions along the Tom Taylor Trail and Fairy Lake. Each day brings a new adventure – from searching for bugs and flowers, learning about different forest animals, scavenger hunts, nature arts & crafts, gardening and outdoor camp games, which are designed for participants to have fun. Campers will go the extra mile to learn about basic survival skills through shelter building, orienteering challenges and much more! This camp will also enjoy two visits to the Community Centre & Lions Hall splash pad, one camp swim, a special guest and trip to a local conservation area each week. Be sure to pack a pair of rainboots, sunscreen and a hat, as campers will explore local creeks and go on daily excursion to Fairy Lake each day!

**5 Day Resident Fee \$200**

**4 Day Resident Fee: \$161**

♥ **Extended Care available at CCLH**



**Click here to  
register online**

## OUTTA TOWNERZ

Ages 9 – 12 Years

📍 **Magna Centre**

Get ready to explore further than ever before! Campers will embark on FIVE full-day trips across the GTA, exploring some of the city's most thrilling destinations. Imagine discovering underwater wonders at Ripley's Aquarium, adventuring through Funville's trampoline park and ninja course, stepping back in time at the AGO, getting active at the ROC, and coming face-to-face with the wildlife at the Toronto Zoo! Each day promises new experiences, laughter and memories to last a lifetime. Admission fees are included.

**Resident Fee \$430**

♥ **Extended Care available at MC**



**Camps Index**

# Specialty Camps

## APP PROGRAMMING

Ages 11 – 14 Years

📍 **Crossland Public School**

*Delivered in partnership with Kids Great Minds*

Dive into a world where every idea can become an app! Campers bring imagination to life by creating smart apps that respond to touch, talk, and location, like a Daily Mood Tracker, an Event Countdown, and a Daily Voice Assistant, a hands-free organizer that listens and acts. They'll design, code, and refine their own creations, watching them come alive instantly on their phones. Each project connects creativity, coding, and real-world technology in fresh, exciting ways that turn ideas into real mobile experiences.

**Resident Fee: \$341**

♥ **Extended Care is available at RTRC**

## ARCHAEOLOGY & CASTLE DEFENSE

Ages 6 – 12 Years

📍 **Clearmeadow Public School**

*Delivered in partnership with Robothink*

Travel back in time to the age of knights, castles, and ancient civilizations! Our Archaeology & Castle Defense Summer Camp offers young adventurers a unique blend of history, archaeology, and medieval strategy. Campers will dig for ancient artifacts, uncover the secrets of lost civilizations, and then put their newfound knowledge to the test by defending a medieval fortress from invaders. With hands-on excavation, historical storytelling, and castle defense strategies, this camp is perfect for history buffs and future archaeologists alike! Signature Builds: catapults, drawstring bridges, portcullis & autonomous patrol cart.

**Resident Fee: \$315**

♥ **No Extended Care available**



## ART ATTACK CAMP

Ages 6 – 9 Years

📍 **Magna Centre**

Let's get crafty! Join us for a week of visual arts and crafts, where campers will enjoy drawing, sketching, painting and so much more! Staff will guide campers through two crafts per day, while encouraging them to put their own unique spin on their one-of-a-kind work. Campers will enjoy a special guest and three recreational swims per week (or three water days during week 9 due to the Magna Pool closure). This camp wraps up with a 'Juice & Cheesie' Art Show on Friday at 3 p.m. for friends and family.

**5 Day Resident Fee: \$220**

**4 Day Resident Fee: \$177**

♥ **Extended Care available at MC**



**Click here to  
register online**

**Camps Index**



## ART STUDIO CAMP

Ages 9 – 13 Years

### Old Town Hall

Join us for a mature and creative learning environment tailored to pre-teens passionate about visual arts. Young artists will be exposed to a variety of art mediums throughout the week, including watercolours, acrylics, sculpture, paper mâché, mosaics, cartooning, sketching, and pen and ink. With guidance from our staff, campers will refine their artistic skills and add their own personalized touch to their pieces. Campers will also enjoy one recreational swim, and special guest OR trip to a local art studio each week. The camp will end with an Art Gallery for friends and family on Friday at 3 p.m., to showcase creations made throughout the week.

**5 Day Resident Fee: \$237.50**

**4 Day Resident Fee: \$191**

♥ Extended Care available at CCLH



**Click here to  
register online**

**Camps Index**

## CARTOON COMPUTER ANIMATION

Ages 6 – 12 Years

### 📍 Crossland Public School

*Delivered in partnership with Kids Great Minds*

Kids will discover how easy and exciting animation can be, with projects designed to get their creations moving on screen within minutes. Throughout the camp, they'll explore the 12 Principles of Animation, the same timeless techniques used by professional animators to make characters more expressive and realistic. This camp helps every child unlock their inner animator and spark their imagination, building confidence to create and express their ideas. The animated projects will be emailed to parents the following week.

**Resident Fee: \$412.50**

♥ Extended Care is available at RTRC

## CITY BUILDERS

Ages 6 – 12 Years

### 📍 Clearmeadow Public School

*Delivered in partnership with Robothink*

Get ready to design, build, and power the cities of the future! Our City Builders Summer Camp immerses campers in the world of robotics, urban planning, and infrastructure design. Through creative challenges, teamwork, and hands-on projects, campers will explore what it takes to construct and manage a thriving city, from smart technology and robotics to sustainable urban planning. Signature Builds: load-bearing bridges, automatic gates & smart traffic-light robots.

**Resident Fee: \$380**

♥ No Extended Care available





## COOKING CAMP

Ages 6 – 8 Years (Jr) & 9 – 12 Years (Sr)

📍 **Old Town Hall**

Get ready to slice, dice, and spice up your summer at Cooking Camp! Young chefs will learn the fundamentals behind healthy eating and basic cooking techniques. Campers will prepare their own lunch and two delicious snacks. Beyond the kitchen, there's a plate full of fun games, crafts, squad challenges and so much more adventure! While participants will be cooking up some tasty bites, campers are encouraged to bring snacks to supplement the food they will be cooking throughout the day. Don't miss this chance to see what's cookin' in Newmarket!

**5 Day Resident Fee: \$265**

**4 Day Resident Fee: \$213**

♥ Extended Care available at RYC

[Camps Index](#)



**Click here to  
register online**



## CRAYOLA – ARTIST'S PASSPORT

Ages 6 – 12 Years

📍 **Armitage Village Public School**

*Delivered in partnership with Mad Science*

Embark on an around-the-world cultural adventure – explore far-off places and learn about the people who live there, from the Americas to Polynesia, from the cosmopolitan to the countryside. Experiment with Crayola® products, while trying art techniques such as calligraphy, sculpting, and patterning developed by local artists and artisans. Make different masterpieces each week such as drums, masks, canvases, prints, buses, and more! Bring the unique creations home and build a globally inspired art gallery. Please note this is an art program. Themes include: Aboriginal Dot Art, Truck Art, Tiki Masks, Block Printing, Rattle Drums, Animal Sculptures, Mud Art, Imperial Jeweled Eggs, Fish Printing, Pacific Coast Art.

**Resident Fee: \$355**

♥ No Extended Care available



**Click here to register online**

**Camps Index**

## CRAYOLA – WILD WORLD

Ages 6 – 12 Years

📍 **Armitage Village Public School**

*Delivered in partnership with Mad Science*

Explore the wonder and beauty of the animal kingdom, and discover nature in a way that inspires empathy, curiosity and creativity. Learn about many different animals and how wildlife conservationists are working to protect species around the globe. Experiment with a variety of art techniques, and use Crayola art materials to create frog paintings, ink diffusion jellyfish, polar bear sculptures and more! Please note this is an art program. Themes: Elephant Silhouettes, Polar Bear Models, Speckled Frogs, Slithering Snakes, Dancing Jellyfish, Watercolour Sharks and Fish, Lion Sculptures, Coiled Turtles, Owls & Orangutan.

**Resident Fee: \$355**

♥ No Extended Care available



## EUREKA!

Ages 6 – 12 Years

📍 **Armitage Village Public School**

*Delivered in partnership with Mad Science*

Explore the wonder and beauty of the animal kingdom, and discover nature in a way that inspires empathy, curiosity and creativity. Learn about many different animals and how wildlife conservationists are working to protect species around the globe. Experiment with a variety of art techniques, and use Crayola art materials to create frog paintings, ink diffusion jellyfish, polar bear sculptures and more! Please note this is an art program. Themes: Elephant Silhouettes, Polar Bear Models, Speckled Frogs, Slithering Snakes, Dancing Jellyfish, Watercolour Sharks and Fish, Lion Sculptures, Coiled Turtles, Owls & Orangutan.

**5 Day Resident Fee: \$355**

**4 Day Resident Fee: \$295**

♥ No Extended Care available



## GAMES & ANIMATIONS PROGRAMMING

Ages 8 – 12 Years

📍 **Crossland Public School**

*Delivered in partnership with Kids Great Minds*

This tech camp introduces kids to the amazing world of computer programming. Using a fun and easy-to-use multimedia software, kids will have great adventures creating games and animations like Pac-Man, Mario and Space Invaders and more. Campers will be solving problems, designing projects and communicating ideas using stackable blocks of code.

**Resident Fee: \$412.50**

♥ **Extended Care is available at RTRC**

## GLEE CAMP

Ages 6 – 8 Years (Jr) & 9 – 12 Years (Sr)

📍 **NewRoads Performing Arts Centre**

Do you love to sing with friends? If so, Glee Camp is where you belong! Throughout the week, campers will unleash their inner superstar by exploring different musical genres, uncovering fascinating music history, and learning catchy harmonies and melodies. They'll even get to create fun movements to go along with their musical pieces, and enjoy one recreational swim and special guest each week! To end the week, campers will take the stage on Friday at 3 p.m. to showcase their hard work and talent.

**5 Day Resident Fee: \$209.50**

**4 Day Resident Fee: \$168.60**

♥ **No Extended Care available**



**Click here to  
register online**

**Camps Index**







## HOLLYWOOD FEATURE FILM MAKING

Ages 9 – 14 Years

📍 **Crossland Public School**

*Delivered in partnership with Film Camp in a Box*  
 Fill your week with action, adventure and a lot of comedy with Film Camp in A Box movie making camp. Mentored by master filmmakers, campers will engage in hands-on exploration of the filmmaking process, including pre production, production and post production. Working in small crews, they will learn about cinematography, script writing and editing on Final Cut Pro. Campers will then create, act in and edit a short film and movie trailer, adding special effects, music, voices, titles and sound effects. Participants will have the opportunity to use our latest technology, including Mac books, 4K cameras, tripods, boom microphones, green screens and the use of an aerial drone. Crews will also create their own promotions and advertising links to showcase their short film to the world. Movies will be presented at our red carpet, popcorn film festival and archived on our digital theatre.

**Resident Fee: \$380**

♥ Extended Care is available at RTRC

## JUNIOR INVENTORS CAMP

Ages 4 – 7 Years

📍 **Clearmeadow Public School**

*Delivered in partnership with Engineering for Kids*  
 We have opened the workshop for a week full of fun, creativity, and of course – Robotics engineering! Campers will invent new machines and explore creative design solutions using the Engineering Design Process. Activities include: Robotics, coding, hands on mechanical & civil engineering.

**Resident Fee: \$365**

♥ No Extended Care available

## LEGO® BRICKS STOP MOTION ANIMATION

Ages 7 – 12 Years

📍 **Crossland Public School**

*Delivered in partnership with Film Camp in a Box*  
 Fill your week with action, adventure and a lot of comedy with Film Camp in A Box. Mentored by master filmmakers, campers will engage in hands-on exploration of the stop motion animation process, including pre production, production and post production. Working in small crews, they will learn about stop motion animation, set design, script writing and editing. Campers will then create their own stop motion animation and edit a short film. Movies will be presented at our red carpet, popcorn film festival and archived on our digital theatre. Please note we do provide Clay and all arts supplies along with a nominal amount of LEGO®. We do encourage participants to bring their own LEGO® and toys to supplement the creation of their film. \* LEGO® is a trademark of the LEGO Group of companies which does not sponsor, authorize or endorse Film Camp in a Box, or this website. \*

**Resident Fee: \$380**

♥ Extended Care is available at RTRC



**Click here to  
register online**

**Camps Index**



## MINECRAFT DESIGN THEME PARK

Ages 7 – 12 Years

📍 **Clearmeadow Public School**

*Delivered in partnership with Engineering for Kids*

This camp will have students build their very own Minecraft amusement parks! Students will have to navigate several engineering and teamwork challenges to do so. Students will draft blueprints and plans for their parks on paper before beginning to create them in Minecraft to make it as much like the process of designing a real amusement park as possible. Activities include: Minecraft design, hands on mechanical engineering.

**Resident Fee: \$375**

♥ No Extended Care available

## MINECRAFT URBAN INNOVATION

Ages 7 – 12 Years

📍 **Clearmeadow Public School**

*Delivered in partnership with Engineering for Kids*

Design, create, and make your very own city come alive using Minecraft! In this camp, kids will explore a variety of themes centered around scientific, sustainable, innovative, and futuristic city planning and design. Kids will immerse themselves in Minecraft while applying the Engineering For Kids® design process to create a model of their very own, futuristic, sustainable city. Activities include: Minecraft, civil & electrical engineering.

**Resident Fee: \$375**

♥ No Extended Care available

## MINI MOVERS

Ages 4 – 6 Years

📍 **Crossland Public School**

Calling all you movers and shakers out there!

Join us for an exciting journey through the world of dance. Campers will be introduced to different styles of dance through high-energy warm-ups, across the floor exercises and new choreography each day. This camp will also enjoy three water days, a special guest, camp games and crafts! The week will wrap up with a dance showcase for friends and family on Friday at 3 p.m.

**Resident Fee: \$209.50**

♥ Extended Care is available at RTRC

## MOVE IT!

Ages 6 – 12 Years

📍 **Old Town Hall**

Calling all you movers and shakers out there!

Join us for an exciting journey through the world of dance. Campers will be introduced to different styles of dance through high-energy warm-ups, across the floor exercises and new choreography each day. This camp will also enjoy one recreational swim, a special guest, camp games and crafts! The week will wrap up with a dance showcase for friends and family on Friday at 3 p.m.

**5 Day Resident Fee: \$209.50**

**4 Day Resident Fee: \$168.60**

♥ Extended Care is available at CCLH

**Camps Index**



**Click here to  
register online**

## MUSIC VIDEO PRODUCTION

Ages 9 – 14 Years

📍 **Crossland Public School**

*Delivered in partnership with Film Camp in a Box.*

Rock and Roll all night and every day in our Music Video Production workshop. Mentored by master filmmakers, campers will engage in hands-on exploration of the music video production process, including pre production, production and post production. Working collaboratively in small crews, they will learn about cinematography specific to music videos and advanced editing techniques. Using an existing pop culture song, campers will listen to the lyrics, learn them and create their own story and meaning. They will then act in and edit their full music video. Movies will be presented at our red carpet, popcorn film festival and archived on our digital theatre.

**Resident Fee: \$315**

♥ **Extended Care is available at RTRC**

## REDSTONE INVENTIONS IN MINECRAFT®

Ages 7 – 11 Years

📍 **Crossland Public School**

*Delivered in partnership with Kids Great Minds*

Campers will enjoy the week building and playing in Minecraft® while learning basic circuitry principles. Campers will use a team approach to discover the underlying mechanics of the game and learn new logic and problem-solving skills, giving them an opportunity to create bigger and better versions of their inventions in the world of Minecraft®.

**Resident Fee: \$412.50**

♥ **Extended Care is available at RTRC**



**Click here to  
register online**

**Camps Index**

## ROCKET CAMP

Ages 6 – 12 Years

📍 **Armitage Village Public School**

*Delivered in partnership with Mad Science*

Yes, we are Rocket Scientists! And you can be too! Blast to the top of the class with an in depth look at all things ROCKET! This action-packed week focuses on the physics of rocket flight, the parts of a rocket and rocket launches. You will experience every aspect of rocket launching as you join a different crew each day. Prepare for launch, send your rockets into the sky and track their altitudes as we launch 10 different rockets each week! You are certain to have a blast exploring, building and launching many varieties of rockets. Daily Topics Include: Rocket Scientists, Rocket Flight, Mission Control, Rocket Propulsion & Recovery, Go for Launch!

**Resident Fee: \$355**

♥ **No Extended Care available**



## RISING STARS

Ages 4 – 6 Years

📍 **Crossland Public School**

Let creativity take centre stage! This specialty camp is the perfect introduction to all things arts! Each day allows campers to express their creativity and imagination through drama games, skits, visual arts and crafts, singing songs and learning short dance routines. Campers will also enjoy traditional camp games, a special guest and three water days each week. A showcase will end each week on Friday at 3 p.m. for friends and family.

**Resident Fee: \$209.50**

♥ **Extended Care is available at RTRC**





## ROBOGAME CARNIVAL & MASTER MACHINES

Ages 7 – 12 Years

📍 **Clearmeadow Public School**

*Delivered in partnership with Engineering for Kids*  
gear up for an exciting week of Robotics & mechanical engineering! In this camp, students will explore several of the mechanical forces that create movement in various machines. Students will work as mechanical engineers using EFK's Engineering Design Process to create exciting, hands-on projects that spin, cascade, launch, pivot, dig, and race. RoboGames Carnival is a place where robots can have fun, compete, and go on an exciting adventure. Activities include: Robotics Competitions, Mechanical Engineering.

**Resident Fee: \$365**

♥ No Extended Care available

## SCIENCE ADVENTURES

Ages 6 – 12 Years

📍 **Armitage Village Public School**

*Delivered in partnership with Mad Science*  
Campers will use forensic science to solve a crime. A visit to Cell City will reveal the inner workings of DNA while a trip down the Organ Trail will provide a Body Portrait. Explore the wonders of gravity, balance and the science behind the illusive sweet spot. Build the strongest helmet for our friend Eggbert in our safe egg challenge. We will discover how to get a rainbow in a test tube and build a Potato Power Plant during a day of radical chemical reactions. Daily Topics Include: Cell City, Organ Trail, The Scene of the Crime, Radical, Reactions, The Science of Sport.

**Resident Fee: \$355**

♥ No Extended Care available

## SCIENCE SLEUTHS

Ages 6 – 12 Years

📍 **Armitage Village Public School**

*Delivered in partnership with Mad Science*

An awesome week of sleuthing, investigation and discovery awaits you! Send messages to your friends with your very own secret code wheels. Hunt down animal tracks and follow hidden scent trails during a day of nature discoveries. Lemon Shockers, Brain Goo and Electroplating will thrill all junior chemists. Children will build their own cool Stereoscopic Viewer to see far-off planets in 3D and become a Mad Science junior astronomer. Daily Topics include: Mad Messages, Earth Awareness, Chemical Counting, Nature, Space.

**Resident Fee: \$355**

♥ No Extended Care available

## STEAM EXPLORERS

Ages 6 – 8 Years

📍 **Armitage Village Public School**

*Delivered in partnership with Wonder Box*

Introduce your growing innovator to fun experiments blended with foundational STEAM learning. Children will participate in a mix of robotics, group challenges and independent projects. They will have the opportunity to build, tinker and test projects like kaleidoscopes, lava lamps, and maze games. They will also spend part of the day exploring robotics with projects including building moving creatures, cars and more. Activities combine creativity with problem-solving, giving children the chance to explore new concepts and learn the “how” and “why” behind each project.

**Resident Fee: \$365**

♥ No Extended Care available



**Click here to  
register online**

**Camps Index**

## THEATRE CAMP

**Ages 6 – 8 Years (Jr) & 9 – 12 Years (Sr)**

### **NewRoads Performing Arts Centre**

Looking to bring your acting skills to the next level? Join us for this 2-week camp designed for aspiring actors of all levels! Campers will develop their performance skills through character development exercises, improvisation activities, drama games, audition preparations, skits, script readings and a special guest. Campers will also enjoy one recreational swim during the first week, while learning the elements of producing a successful show. This camp will put on two performances for friends and family to come support our talented performers and watch them shine on stage! Show times include the final Thursday evening at 6 p.m. and the final Friday afternoon at 3 p.m. There is an evening show for this camp on Thursday July 23 and Thursday August 20 at 6:00 p.m. Extended Care will be provided only on these dates, until the end of the show.

**Resident Fee: \$422.50**

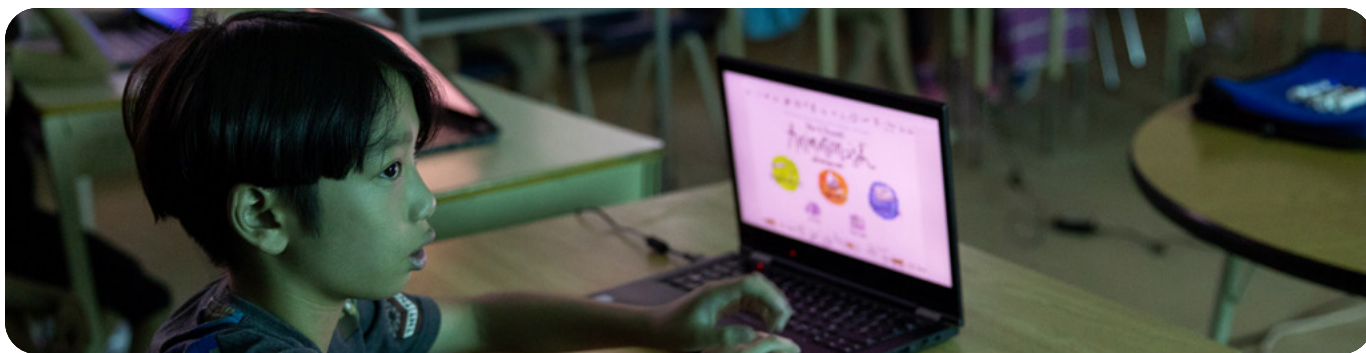
♥ No Extended Care available



**Click here to  
register online**

**Camps Index**





## TIME TRAVELERS CAMP

Ages 6 – 9 Years

📍 **Elman W. Campbell Museum**

Step back into history at the Elman W. Campbell Museum! Each day campers will learn about life in the ancient worlds from the Romans, Vikings and even Aztecs. Campers will have the chance to learn about ancient civilizations, take part in scavengers hunts and work hands-on with artifacts. Workshops will include making your own shields or decoding ancient mysteries at the museum while surrounded by history.

**Resident Fee: \$220**

♥ **Extended Care is available at CCLH**

## VIDEO GAME CREATION

Ages 7 – 11 Years

📍 **Crossland Public School**

*Delivered in partnership with Kids Great Minds*

Campers will learn a visual programming language using an icon-based interface, allowing young learners to grasp game design concepts in a simple, direct, and intuitive way. This “intelligent screen time” is a great introduction to computer programming. They’ll build a Racing Game, design a Maze, and code and compete in fun multiplayer challenges. Xbox controllers will be on-site to simulate the console experience and make gameplay even more exciting.

**Resident Fee: \$412.50**

♥ **Extended Care is available at RTRC**



**Click here to  
register online**

## WORLD GAMES ENGINEERING

Ages 7 – 12 Years

📍 **Clearmeadow Public School**

*Delivered in partnership with Engineering for Kids*

The competition is heating up with the Engineering For Kids® World Games! In this camp, campers will work in teams to compete for the gold as they take on exciting engineering challenges related to the greatest athletic competitions. A place where engineers work to design the best experience for athletes, and robots compete in athletic challenges such as Hockey, Running, and Basketball and more. This is a gold medal-worthy program filled with all the fun and excitement of the Olympic® games! Get ready to step up to the podium as we declare victory in inspiring the next generation of engineers! Activities include: Robotics, coding, hands on engineering.

**Resident Fee: \$365**

♥ **No Extended Care available**

## 3D PRINTING & MODELLING

Ages 8 – 12 Years

**Crossland Public School**

*Delivered in partnership with Kids Great Minds*

Come and 3D print with us!! Campers will fabricate their own 3D objects from start to finish; such as cars, minions, robots, small toys and more. Our 3D printer will be on site so kids can see it in action, learning how it works, while printing their own creations! Each participant will be able to print 2 small 3D pieces to take home to show off!

**Resident Fee: \$412.50**

♥ **Extended Care is available at RTRC**

**Camps Index**



# Sports Camps

## BASKETBALL CAMP

Ages 9 – 13 Years

📍 **Clearmeadow Public School**

*Delivered in partnership with YNBA*

Stay healthy and active this summer with YNBA Basketball. The Town of Newmarket has partnered with the not-for-profit organization, YNBA, to run skills and drills all in a 'fun' filled atmosphere! Take your game to the next level! Campers will participate in outdoor activities daily, unless there is inclement weather.

**5 Day Resident Fee: \$310**

**4 Day Resident Fee: \$259**

💙 No Extended Care available

## CAMP EXTREME

Ages 9 – 12 Years

📍 **Magna Centre**

Welcome to Camp Extreme, where we take adventure and fun to the next level! Take on the challenge of Cold Creek's high ropes course, test your jumps at Air Riderz Trampoline Park, and level up your parkour skills at Monkey Vault, and indoor playground built for bold explorers. Back at camp, riders can try new tricks at the outdoor skate park, and dive into the excitement at Rail Yard Aqua Park. Every day offers a new opportunity to unleash your inner daredevil! This action-packed and adrenaline-pumping camp also includes camp games, sports, team challenges and two recreational swims each week. Participants require their own skateboard or scooter and skateboard helmet. Equipment NOT permitted includes: bike helmets, multi-use helmets, roller skates, penny boards, long boards, RipStiks, scooters with large wheels, and three-wheeled scooters.

**5 Day Resident Fee: \$430**

**4 Day Resident Fee: \$345**

💙 Extended Care is available at MC



## GRAND SLAM SUMMER

Ages 8 – 12 Years

📍 **Ray Twinney Recreation Complex**

Batter up! Step up to the plate for a week of baseball fun! Campers will build skills in throwing, catching, batting technique, base running, infield & outfield positioning and game strategy through daily drills, camp games, teamwork challenges and friendly scrimmages. From big swings to speedy sprints, the focus is on getting campers active, sportsmanship, confidence and developing a love for the game. This camp will also enjoy a special guest and three recreational swims each week. Let's get ready to hit it out of the park this summer!

**Resident Fee: \$210**

💙 Extended Care is available at RTRC



**Click here to  
register online**

**Camps Index**



## HOCKEY CAMP JR & SR

Ages 7 – 9 Years (Jr) & 10 – 12 Years (Sr)

📍 **Magna Centre**

Get ready to elevate your game at Hockey Camp! Campers will learn on and off ice skills and drills to enhance playing performance. Each day will include three hours of ice time, ball hockey, team challenges, fitness exercises and camp games. With a focus on getting active and having fun, this recreational camp is perfect for players who want to learn the fundamentals of hockey. Participants must be able to skate independently and bring full hockey equipment, including a CSA approved helmet with face cage, mouth guard, neck guard, jersey, shoulder pads, elbow pads, jock, gloved, hockey stick, hockey pants, shin pads, hockey socks and skates.

**5 Day Resident Fee: \$270**

**4 Day Resident Fee: \$217**

💙 Extended Care is available at MC

## HOCKEY CAMP MINI

Ages 4 – 6 Years

📍 **Magna Centre**

Lace up and let the fun begin! Designed for young players and independent skaters, this camp introduces children to the basics of hockey in a recreational setting. Campers will enjoy one 45-minute on-ice sessions to build confidence, practice skating, and learn simple hockey skills through fun games and drills. Off the ice, campers will participate in ball hockey, teamwork activities, and active camp games. Participants must be able to confidently skate on their own and bring full hockey equipment, including a CSA approved helmet with face cage, mouth guard, neck guard, jersey, shoulder pads, elbow pads, jock, gloved, hockey stick, hockey pants, shin pads, hockey socks and skates.

**Resident Fee: \$237.50**

💙 Extended Care is available at MC



**Click here to  
register online**

## MARTIAL ARTS CAMP

Ages 6 – 10 Years

📍 **Armitage Village Public School**

*Delivered in partnership with Jitsu-Do Karate*  
Self-defense, kicks, punches, fitness and fun awaits at Martial Arts Camps, in partnership with Jitsu-Do Karate! Learn the fundamentals of Karate, Brazilian Jiu-Jitsu and Judo along with self-defense, and lots of fun martial arts-themed games and crafts!

**Resident Fee: \$299**

💙 No Extended Care available

**Camps Index**



## MINOR LEAGUERS

Ages 4 – 5 Years

📍 **Magna Centre**

Hey future sports stars! Are you ready for an action-packed week at Minor Leaguers? Jump into all kinds of exciting sports, and team up with new rookies to learn a variety of new skills, drills and rules. Plus, enjoy active camp games, crafts, songs, outdoor play, a special guest and three water days each week. Bring your best sportsmanship and get ready to cheer each other on!

**5 Day Resident Fee: \$200**

**4 Day Resident Fee: \$161**

💙 Extended Care is available at MC

## OFF TO THE OLYMPICS

Ages 6 – 8 Years

📍 **Ray Twinney Recreation Complex**

Join our journey to the Town of Newmarket Olympic Games! Athletes will participate in opening and closing ceremonies, igniting their friendly-competitive spirit and passion for sports. Each day is packed with a variety of drills and games to teach campers the fundamental skills and rules of different Summer Olympic sports, including volleyball, soccer, track and field, badminton, basketball, and much more! Campers will also enjoy team challenges, fitness activities, traditional camp games, outdoor play, a special guest and three camp swims each week.

**Resident Fee: \$200**

💙 Extended Care is available at RTRC

## OUTDOOR SPORTS SR

Ages 9 – 12 Years

📍 **Ray Twinney Recreation Complex**

Join us for a week of outdoor sports at the Ray Twinney Recreation Complex! Learn the rules of a variety of sports, and channel your inner athlete by participating in daily training sessions in track, ultimate frisbee, flag football, soccer, baseball and more! The focus is on getting campers active through a variety of skills, drills, team challenges, camp games, fitness exercises and outdoor play. This camp will also enjoy a special guest and three recreational swims each week.

**5 Day Resident Fee: \$200**

**4 Day Resident Fee: \$161**

💙 Extended Care is available at RTRC

## RACQUET SPORTS

Ages 7 – 11 Years

📍 **Armitage Village Public School**

*Delivered in partnership with Elevation Athletics*

Join us for an exciting and dynamic summer camp offered in partnership with Elevation Athletics where kids not only learn the ins and outs of badminton and pickleball, but also enjoy a wide variety of activities that promote creativity, teamwork, and outdoor playtime! Throughout the camp, young athletes will participate in skill-building drills and fun games focused on badminton and pickleball. Whether they are learning how to serve, rally, or perfect their footwork, they will develop important sports techniques in a supportive and engaging environment.

**Resident Fee: \$323**

💙 No Extended Care available



**Click here to  
register online**

**Camps Index**





## SOCCER CAMP

Ages 7 – 9 Years (Jr) & 10 – 12 Years (Int)

📍 **Newmarket Soccer Club**

*Delivered in partnership with Newmarket Soccer Club*

Play like a champion in the World Cup! The Town of Newmarket has partnered with the Newmarket Soccer Club to run a soccer specific camp based around fun filled skills and activities in the Newmarket Soccer Club. Campers will develop their soccer training through small-sided games and ball mastery. Come play like Jessie Fleming and Alphonso Davies!

**Resident Fee: \$350**

💖 No Extended Care available

[Camps Index](#)



**Click here to  
register online**



## SKATE & SCOOTER

Ages 6 – 9 Years (Jr) & 9 – 12 Years (Sr)

📍 **Recreation Youth Centre & Indoor Skate Park**

Get ready to unleash your inner Tony Hawk by mastering the elements of scootering and skateboarding and learning park etiquette! This action-packed camp is perfect for everyone, from beginners to seasoned skaters, offering plenty of skateboard and scooter time to practice. But that's not all – our staff will lead campers through a variety of active games, sports and outings along the Tom Taylor Trail, plus a refreshing recreational swim once a week. Please note, no official instruction is provided, but staff are available to support riders and give pointers and encouragement throughout the day! Participants require their own skateboard or scooter, skateboard helmet and running shoes. Equipment NOT permitted includes: bikes, bike helmets, multi-use helmets, roller skates, penny boards, long boards, RipStiks, scooters with large wheels, and three-wheeled scooters.

**5 Day Resident Fee: \$200**

**4 Day Resident Fee: \$161**

♥ Extended Care is available at RTRC



**Click here to register online**

**Camps Index**

## SPORTS CAMP JR

Ages 6 – 8 Years

📍 **Magna Centre**

GAME ON! Campers will dive into a mix of sports each day, learning basic skills and rules of each sport. Through engaging drills, camp games, three recreation swims (or three water days during week 9 due to the Magna Pool closure), a special guest and outdoor play, participants are sure to stay active and energized all week. Get ready to bring your game face and join the fun!

**5 Day Resident Fee: \$200**

**4 Day Resident Fee: \$161**

♥ Extended Care is available at MC

## SWIM CAMP JR & SR

Ages 6 – 9 Years (Jr) & 9 – 12 Years (Sr)

📍 **Magna Centre or Ray Twinney Recreation Complex**

For the adventurous fish in your family! In this two-week camp, Town of Newmarket lifeguards will guide campers through 45-minute swimming lessons, four times each week. During these lessons, campers will have the opportunity to work towards an LSS Swim for Life level. Swim groups will be created by grouping together swimmers of similar levels. Each day also includes a fun-filled recreational swim, where campers can splash, play games and make new friends! When they're not making waves in the pool, campers will immerse themselves in traditional camp games, crafts, squad challenges and outdoor play.

**10 Day Resident Fee: \$612**

**9 Day Resident Fee: \$551.30**

♥ Extended Care is available at MC or RTRC

## SWIM CAMP MINI

Ages 4 – 6 Years

📍 **Magna Centre**

For the little fish in your family! In this two-week camp, Town of Newmarket lifeguards will guide campers through 30-minute swimming lessons, four times each week. During these lessons, campers will have the opportunity to work towards an LSS Swim for Life level. Swim groups will be created by grouping together swimmers of similar levels. When not in the pool, campers will immerse themselves in water play, traditional camp games, crafts, squad challenges and outdoor play.

**Resident Fee: \$551.30**

💙 **Extended Care is available at MC**

## SWIMCYCLE

Ages 6 – 8 Years (Jr) & 9 – 12 Years (Sr)

📍 **Stuart Scott Public School or Recreation Youth Centre & Indoor Skate Park**

Gear up and get ready for an adventure! Swim, cycle, tread, trail, float and cruise your way through the summer. With daily bike rides around Newmarket's trails, campers will also cool down with refreshing recreational swims each day. Participants must be proficient and independent bike riders, and bring their own bike, helmet and lock. Due to safety concerns, training wheels are not permitted. Please note, overnight bike storage is not provided, and bikes must be brought home at the end of each day.

**5 Day Resident Fee: \$210**

**4 Day Resident Fee: \$169**

💙 **Extended Care is available at SSPS or RYC**



## TENNIS & COURT SPORTS

Ages 6 – 8 Years (Jr) & 9 – 12 Years (Sr)

📍 **Stuart Scott Public School**

Get ready to serve up some fun with a game of tennis and other court sports! Half of the camp day will be spent on the tennis courts improving their forehand, backhand, serve and volleys through drills and matches. The camp will switch things up in the afternoon by exploring a variety of court sports, including basketball, volleyball, pickleball, badminton, handball, futsal and floorball! Campers will learn the rules and techniques of each sport, enjoy three recreational swims and be joined by tennis instructors from Newmarket's very own Keith Davis Tennis Centre each week. Participants must bring their own tennis racket.

**5 Day Resident Fee: \$210**

**4 Day Resident Fee: \$169**

💙 **Extended Care is available at SSPS**

## ULTIMATE FRISBEE

Ages 9 – 13 Years

📍 **Armitage Village Public School**

*Delivered in partnership with Toronto Rush*

Learn from professional players and coaches from the Toronto RUSH! Coaches will also include elite Women's players from the GTA. Campers will learn the rules of Ultimate Frisbee and enjoy scrimmage games 4X4. Other skills learned include gripping the disc, forehand throws, backhand throws, catching the disc, cutting and creating space, small area games and distance throwing.

**Resident Fee: \$290**

💙 **No Extended Care available**



**Click here to  
register online**

**Camps Index**



# Leadership Camps


## COMMUNITY HEROES CAMP

Ages 10 – 12 Years

 **Ray Twinney Recreation Complex**

In partnership with the Ontario SPCA & Humane Society, York Region Police, Central York Fire Services and York Region Paramedic Services, campers will be introduced to the life of our community heroes! Campers will enjoy daily special guest visits and one local trip, where they will learn more about the exciting world of a veterinarian, police officer, firefighter and paramedic. They will get the chance to meet real-life heroes, try out equipment, and experience what it takes to step into these essential roles. Through interactive activities, hands-on demonstrations, and team challenges, campers will learn what it takes to protect and help others. Campers will leave the week with a sense of leadership and responsibility, while inspiring the next generation of everyday heroes!

**Resident Fee: \$181**

 **Extended Care is available at RTRC**



**Click here to  
register online**



## COUNSELLOR IN TRAINING

Ages 13 – 16 Years

 **Ray Twinney Recreation Complex**

Are you interested in preparing to become a successful camp counsellor? In this course, you will learn about program planning, games and resources, behaviour management strategies and more. Standard First Aid and CPR-C, Safeguard, and HIGH FIVE: Principles of Healthy Child Development certifications included. Certificates are only given to those who have 100% attendance and receive a passing grade during their final practical and written exams. This course includes a 2-week in class portion, followed by a volunteer placement for successful candidates at a Town of Newmarket Summer Camp. Placements will be coordinated on site with the Camp Director. Note: there are no prerequisites for this course.

**Resident Fee: \$475**

 **No Extended Care available**


## JUNIOR LIFEGUARD

Ages 10 – 12 Years

 **Ray Twinney Recreation Complex**

Dive into the exciting world of lifeguarding at this one-week camp! Improve your skills, your strokes, make new friends, get fit and have fun! Jr Lifeguard emphasizes improving overall fitness and endurance along with promoting teamwork, leadership, and lifesaving knowledge through fun aquatic lifesaving-based activities. Throughout the week, campers will work with their teammates to develop a water safety community education project. Swimmers must be able to swim 25m of the pool and be comfortable in deep water.

**Resident Fee: \$237.50**

 **Extended Care is available at RTRC**

**Camps Index**

## LEADER IN TRAINING

Ages 10 – 12 Years

### 📍 Ray Twinney Recreation Complex

Step up and make a difference! This one-week course empowers Leaders in Training (LITs) to develop essential leadership skills, while introducing them to the world of camps. Through fun, hands-on activities and real-life projects, LITs will learn about problem solving, professionalism, inclusion, communication and teamwork – core skills that will set them up for success at camp and beyond! They'll also explore topics such as, conflict resolution, goal setting, action planning and leading younger campers. Throughout the week, Leaders in Training will work as a group to put on a Mini-Event for Town of Newmarket Camps to attend at the end of the week. There is no placement.

**Resident Fee: \$220.75**

♥ Extended Care is available at RTRC

## DISCOVER CAMP

Ages 9 – 12 Years

### 📍 Old Town Hall

*Delivered in partnership with Medics Camp*

Medics Camp Discover lets kids become doctors for a week through hands-on experiments and activities! Campers investigate germs, don and doff gloves, examine a pig heart, take vital signs with real equipment, practice dentistry learn first aid, skills, operate a fracture clinic, learn CPR, and even deliver babies. Recognized by STEM.org among the top 10% of STEM-accredited programs worldwide, every day at Medics Camp is a STEM powered journey through medical science, the human body, and the world of healthcare professionals.

**Resident Fee: \$414**

♥ Extended Care is available at CCLH



**Click here to  
register online**

**Camps Index**

# Summer Camp Volunteer Training

Interested in building your experience for future employment?

Want to make a difference in your community?

Looking to help make summer camp a fun and inclusive place for all?

The Town of Newmarket has a free Summer Camp Volunteer Training for youth looking to gain experience working with children and developing their leadership skills!

- **When:** Wednesday, June 3, 2026 from 4:30 to 8 p.m.
- **Where:** Community Centre & Lions Hall
- **How to Register:** Use barcode **78741** to register through your [newmarket.perfectmind.com](https://newmarket.perfectmind.com) account!

Successful candidates will be contacted regarding their one-week camp placement following the course and can use these hours towards their high school volunteer hours! Successful candidates are those that are actively listening and engaged during the entirety of the course, respectful towards other participants and the instructor, and show an interest in the volunteer position. Please come to class with the Volunteer Application filled out. This will be sent to participants prior to the course via email.

**Volunteers must be 14 years of age or older by the start of the course.**

Looking for additional volunteer hours, more information on becoming a Town of Newmarket camp staff, and ALL certifications needed to work camps? Check out our Counsellor in Training course on page 38 for this amazing opportunity!





# Adapted Camps

Adapted Camps are specifically designed programs for campers with disabilities. These camps will feature small staff to participant ratios (1:3), smaller group sizes, a sensory aware environment, and specifically designed programming to meet the needs of all campers.

## CAMP OHANA

**Ages 13 – 19 Years**

**📍 Community Centre & Lions Hall**

Youth with disabilities and unique needs are invited to Camp Ohana, an adapted camp focusing on independence, friendships, and social skills. The diverse program includes adapted play, water play/swimming, outdoor walks, special guests, and hands-on Life Skills. A 1:3 staff ratio is provided; those needing 1:1 support must register for Inclusion 1:1 Support.

**5 Day Resident Fee: \$300**

**4 Day Resident Fee: \$241**

♥ Extended Care is available at CCLH



## ENDLESS ADVENTURE

**Ages 4 – 6 Years**

**📍 Community Centre & Lions Hall**

Endless Adventure is a thoughtfully designed camp created to support the unique needs of preschool-aged children with disabilities. Our program offers a welcoming, safe, and nurturing environment where children can explore, learn, and grow through a variety of sensory-rich and developmentally appropriate activities. Every child has the opportunity to engage in meaningful and joyful experiences, allowing them to explore new challenges while being supported in a way that respects their unique pace and abilities. Whether it's through hands-on crafts, interactive games, or group activities, Endless Adventure ensures that each child enjoys a fun, enriching experience every day. A 1:3 staff to participant ratio will be provided. Campers unable to participate in a 1:3 ratio and requiring 1:1 support must register into Inclusion 1:1 Support.

**Resident Fee: \$300**

♥ Extended Care is available at CCLH

## SENSE-ATIONAL

**Ages 4 – 6 Years**

**📍 Community Centre & Lions Hall**

In this adapted camp for children with disabilities, campers will have the opportunity to explore all their five senses in an engaging and supported way. Participants will spend time connecting with nature, expelling energy and engaging in traditional camp activities and games. This camp will also feature water play/swimming, outdoor picnics, crafting, dancing, adventures to the park and a featured special guest. A 1:3 staff to participant ratio will be provided. Campers unable to participate in a 1:3 ratio and requiring 1:1 support must register into Inclusion 1:1 Support.

**5 Day Resident Fee: \$300**

**4 Day Resident Fee: \$241**

♥ Extended Care is available at CCLH



**Click here to  
register online**

**Camps Index**

# Summer Camp Chart

Camp	Location	Age	Weeks Available									
Art Attack	MC	6 to 9	1	2	3	4	5	6	7	8	9	10
Art Studio Camp	OTH	9 to 13	1	2	3	4	5	6	7	8	9	10
Basketball Camp	CLPS	8 to 12	1	2	3	4	5	6	7	8	9	10
Camp Extreme	MC	9 to 12	1	2	3	4	5	6	7	8	9	10
Camp Newlaka	CCLH	5 to 7	1	2	3	4	5	6	7	8	9	10
Camp OHANA	CCLH	13 to 19	1	2	3	4	5	6	7	8	9	10
Camp Quest	RYC	8 to 12	1	2	3	4	5	6	7	8	9	10
Community Heroes	RTRC	10 to 12	1	2	3	4	5	6	7	8	9	10
Cooking Camp	RYC	6 to 12	Jr	Sr	Jr	Sr	Jr	Sr	Jr	Sr	Jr	10
Counsellor in Training	RTRC	13 to 16	1	2-3	4-5	6	7-8	9	10			
Endless Adventure	CCLH	4 to 6	1	2	3	4	5	6	7	8	9	10
Engineering for Kids	CLPS	4 to 12	1	2	3	4	5	6	7	8	9	10
Film Camp in a Box	CRPS	7 to 14	1	2	3	4	5	6	7	8	9	10
Glee Camp	NRPAC	6 to 12	1	Jr	3	4	Jr	Sr	7	8	9	10
Grand Slam Summer	RTRC	8 to 12	1	2	3	4	5	6	7	8	9	10
Hockey Camp	MC	4 to 12	Jr	Sr	M	Jr	Sr	Jr	Sr	Jr	Jr	10
Jitsu-Do Karate	AVPS	6 to 10	1	2	3	4	5	6	7	8	9	10
Junior Lifeguard	RTRC	10 to 12	1	2	3	4	5	6	7	8	9	10
Kids Great Minds	CRPS	6 to 14	1	2	3	4	5	6	7	8	9	10
Kids on the Move	TFPS	4 to 12	1	2	3	4	5	6	7	8	9	10

MC - Magna Centre   OTH - Old Town Hall   CCLH - Community Centre & Lions Hall  
 RYC - Recreation Youth Centre & Indoor Skate Park   CLPS - Clearmeadow Public School  
 CRPS - Crossland Public School   RTRC - Ray Twinney Recreation Complex  
 NRPAC - NewRoads Performing Arts Centre

# Summer Camp Chart

Kids Place Camp	RTRC	4 to 8	1	2	3	4	5	6	7	8	9	10
Leader in Training	RTRC	10 to 12	1	2	3	4	5	6	7	8	9	10
Mad Science	AVPS	6 to 12	1	2	3	4	5	6	7	8	9	10
Medics Camp	OTH	9 to 12	1	2	3	4	5	6	7	8	9	10
Mini Adventures	TFPS	4 to 6	1	2	3	4	5	6	7	8	9	10
Mini Movers	CRPS	4 to 6	1	2	3	4	5	6	7	8	9	10
Minor Leaguers	MC	4 to 5	1	2	3	4	5	6	7	8	9	10
Move It!	OTH	6 to 12	1	2	3	4	5	6	7	8	9	10
Off to the Olympics	RTRC	6 to 8	1	2	3	4	5	6	7	8	9	10
Outdoor Rangers	CCLH	7 to 10	1	2	3	4	5	6	7	8	9	10
Outdoor Sports Sr	RTRC	9 to 12	1	2	3	4	5	6	7	8	9	10
Outta Townerz	MC	9 to 12	1	2	3	4	5	6	7	8	9	10
Racquet Sports	AVPS	7 to 11	1	2	3	4	5	6	7	8	9	10
Rising Stars	CRPS	4 to 6	1	2	3	4	5	6	7	8	9	10
Robothink	CLPS	6 to 12	1	2	3	4	5	6	7	8	9	10
SENSE-ational	CCLH	6 to 12	1	2	3	4	5	6	7	8	9	10
Skate & Scooter	RYC	6 to 12	Jr	Jr	Sr	Jr	Jr	Jr	Sr	Jr	Jr	Jr
Soccer Camp	NSC	7 to 12	1	Jr	Int	Jr	Int	6	7	8	9	10
Sports Camp Jr	MC	6 to 8	1	2	3	4	5	6	7	8	9	10
Swim Camp	MC	4 to 12	Jr		Sr		M		Sr		9	10
Swim Camp	RTRC	6 to 12	1	2	Jr		Jr		Jr		9	10

TFPS - Terry Fox Public School   RTRC - Ray Twinney Recreation Complex   CRPS - Crossland Public School  
 AVPS - Armitage Village Public School   OTH - Old Town Hall   CCLH - Community Centre & Lions Hall  
 MC - Magna Centre   RYC - Recreation Youth Centre & Indoor Skate Park  
 CLPS - Clearmeadow Public School



# Summer Camp Chart

Swimcycle	RYC	9 to 12	Sr	2	3	4	5	6	7	8	Sr	10
Swimcycle	SSPS	6 to 12	1	Jr	Sr	Jr	Sr	Jr	Sr	Jr	9	10
Tennis & Court Sports	SSPS	6 to 12	1	Sr	Jr	Sr	Jr	Sr	Jr	Sr	9	10
Theatre Camp	NRPAC	6 to 12	1	2	Sr		5	6		Jr	9	10
Time Travellers Camp	EWCM	6 to 9	1	2	3	4	5	6	7	8	9	10
Ultimate Frisbee	AVPS	9 to 13	1	2	3	4	5	6	7	8	9	10
Wonderbox	AVPS	6 to 8	1	2	3	4	5	6	7	8	9	10

RTRC - Ray Twinney Recreation Complex   RYC - Recreation Youth Centre and Indoor Skate Park  
 SSPS - Stuart Scott Public School   NRPAC - NewRoads Performing Arts Centre  
 EWCM - Elman W. Campbell Museum   AVPS - Armitage Village Public School







## SUMMER CAMP PLANNER

Use the Summer Camp Planner to help you organize a fun and unforgettable summer!

# Summer Camp Planner

Name of Camper:

Dates	Camp Name	Camp Code	Location	Extended Care	Total Cost
Week 1: June 29 - July 3				a.m. p.m.	
Week 2: July 6 - 10				a.m. p.m.	
Week 3: Jul 13 - 17				a.m. p.m.	
Week 4: July 20 - 24				a.m. p.m.	
Week 5: July 27 - 31				a.m. p.m.	
Week 6: August 4 - 7				a.m. p.m.	
Week 7: August 10 - 14				a.m. p.m.	
Week 8: August 17 - 21				a.m. p.m.	
Week 9: August 24 - 28				a.m. p.m.	
Week 9: August 31 - September 4				a.m. p.m.	
Total Cost:					





## Creating Accessible Recreation for Everyone

**The Town of Newmarket's Care Fund is now available. Give the gift of recreation by donating to the Care Fund today.**

The Town of Newmarket aims to “Create Accessible Recreation for Everyone” by offering financial assistance to residents of all ages on any Town of Newmarket Recreation & Culture registered programs. The objective of this program is to offer increased opportunities to those who may require financial assistance that would not otherwise be able to participate in recreation.

**Click the buttons below to Apply or Donate to care.**



**Apply online**



**Printable  
Application**



**Learn more**

# Subsidy Information

## Local Charities

### Canadian Tire Jumpstart®

Canadian Tire Jumpstart® is a community-based charitable program that helps kids aged 4 to 18 participate in organized sports and recreation such as hockey, dance, soccer and swimming, so they can develop important life skills, self-esteem and confidence.

**Eligible** – Newmarket Residents between the ages of 4 to 18

**Criteria** – Application + must demonstrate need for financial assistance with provision of proof of receiving subsidy (EI, OW, OH, GTRI, ODSP)

**Frequency** – Twice per annum (Jan-June and July-Dec)

**Amount** – Eligible 100% up to maximum of \$200

**Contact** – 905-895-5193 ext. 2705 Canadian Tire Jumpstart® - Newmarket Chapter  
– Contact 905-895-5193 or [ctjs@newmarket.ca](mailto:ctjs@newmarket.ca)

## York Region Subsidy Programs

York Region offers various types of subsidies for families with low to moderate income.

For more information on programs and eligibility, please visit [www.york.ca/children](http://www.york.ca/children) or contact ACCESS YORK AT 1(877) 464-9675.

York Region does not guarantee funding or space in programs or camps.





