



INFORMATION REPORT
TOWN OF NEWMARKET
395 Mulock Drive
P.O. Box 328
Newmarket, ON L3Y 4X7

www.newmarket.ca
info@newmarket.ca
905.895.5193

October 20, 2014

DEVELOPMENT & INFRASTRUCTURE SERVICES- JOINT PLANNING AND BUILDING SERVICES AND ENGINEERING SERVICES REPORT – INFORMATION REPORT NP-14-44

TO: Council, SLT and OLT
SUBJECT: Greenbelt Cycling Route
ORIGIN: Planning and Building Services and Engineering Services

PURPOSE OF THIS REPORT

The purpose of this report is to update Council, SLT and OLT on a minor modification to the Green Belt Cycling Route within Newmarket.

COMMENTS

In accordance with the Procedure By-law, any Member of Council may request this Information Report be placed on an upcoming Committee of the Whole agenda for discussion.

Background

In June 2014 the Council endorsed the proposed alignment of the Greenbelt Route within the Town of Newmarket as proposed by the Waterfront Regeneration Trust. The June 16, 2014 staff report may be accessed through the following link:

<http://newmarket.siretechnologies.com/sirepub/cache/2/gst5rftoagqengif2azzlx3h/1485910202014114532440.PDF>

The route originally was planned to follow the current park trail through Armstrong Family Park, however, the access to the trail within the Armstrong Family Park does not have a curb cut to facilitate easy access by cyclists from Joe Persechini Drive onto the park trail.

An alternate route has been proposed on Shoniker Drive, connecting to a short Town owned block that connects to the main trail. See Attached Map 1.

From staff's perspective, the proposed alternative route is preferred for two reasons, namely: the Town would not need to undertake a curb cut; and the Trail would be maintained on the road rather than traverse through a neighbourhood scale park.

Unless there is a request from a member of Council **within the next two (2) weeks** that this Information Report be brought forward to the next Committee of the Whole meeting, staff will advise the Waterfront Trust that the Town supports the revised route.

BUSINESS PLAN AND STRATEGIC PLAN LINKAGES

This report supports the following components of the Strategic Plan:
Living Well - emphasis on active lifestyles and recreational opportunities: and
Well-connected – providing for walking and biking trails, paths and lanes.

CONSULTATION

Consultation has occurred with the Waterfront Trust, York Region and Engineering Services.

HUMAN RESOURCE CONSIDERATIONS

a) Not applicable to this report.

BUDGET IMPACT

Operating Budget (Current and Future)


None at this time.

Capital Budget

None at this time.

CONTACT

For more information on this report, contact Marion Plaunt, Senior Planner, Policy at 905 953-5300 Ext. 2459 or at mplaunt@newmarket.ca.



Marion Plaunt, MES, MCIP, RPP
Senior Planner – Policy
Planning & Building Services




Jason Unger, B.E.S., M.PI, MCIP, RPP
Assistant Director of Planning
Planning & Building Services



Richard Nethery, B.E.S., MCIP, RPP
Director of Planning & Building Services

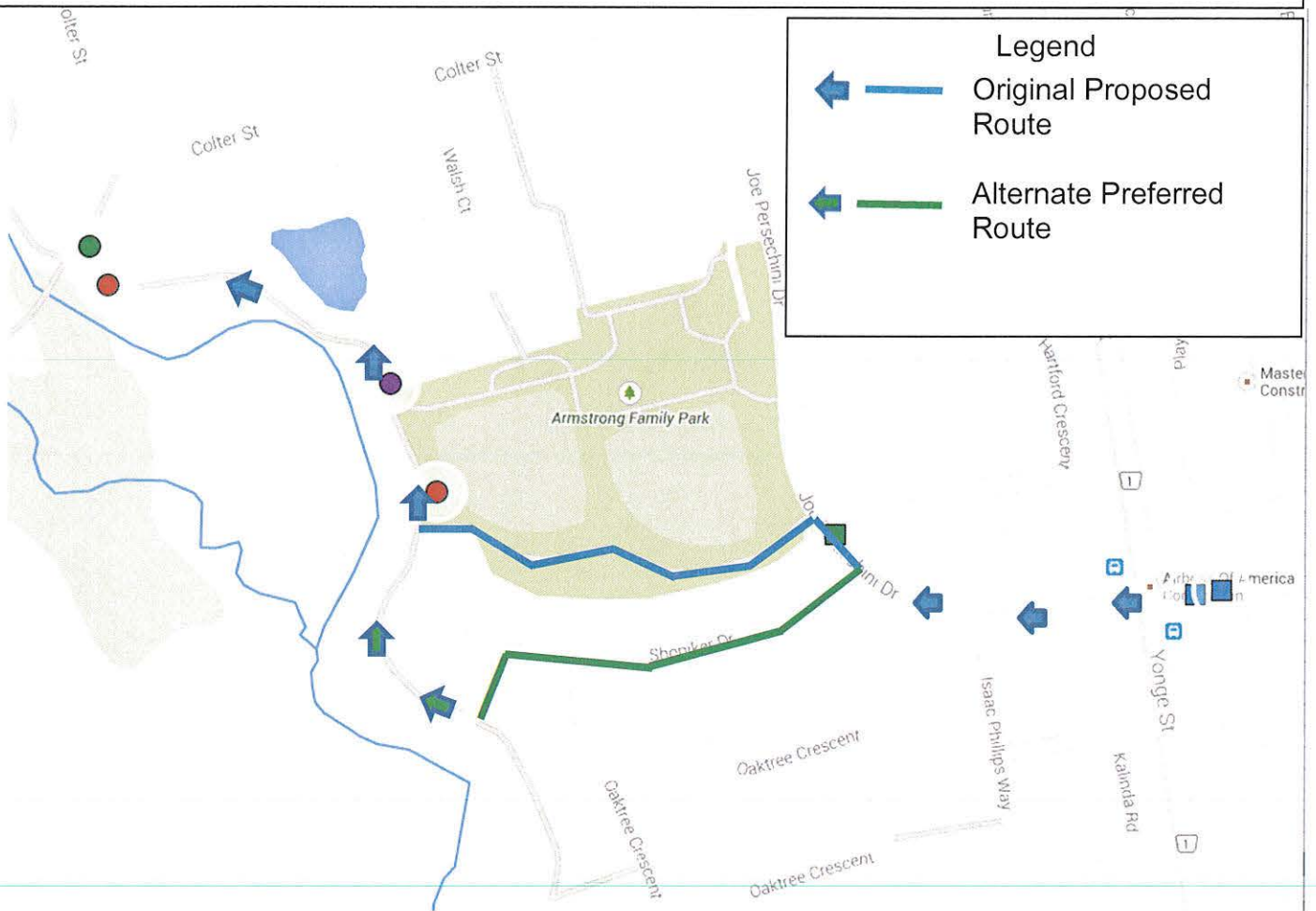


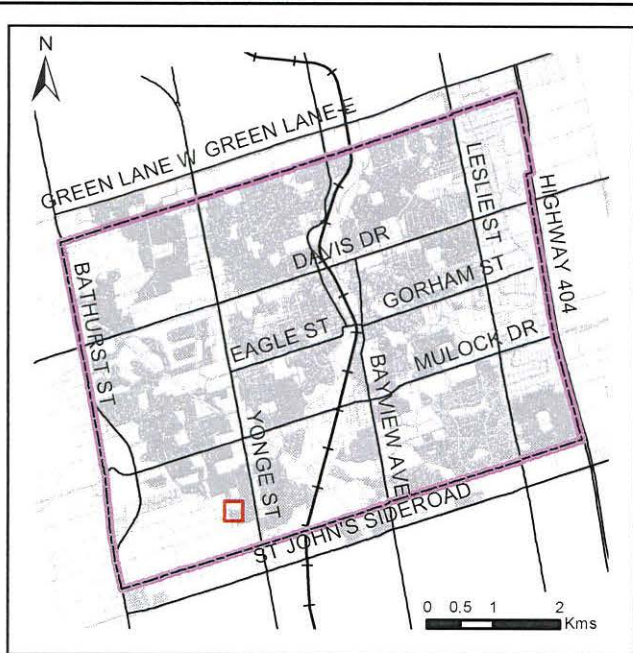
Rachel Prudhomme, M.Sc., P. Eng.
Director, Engineering Services



Peter Noehammer, P. Eng.
Commissioner
Development and Infrastructure Services

Map 1 Original Proposed and Alternate Preferred Route for the Waterfront Trust Trail





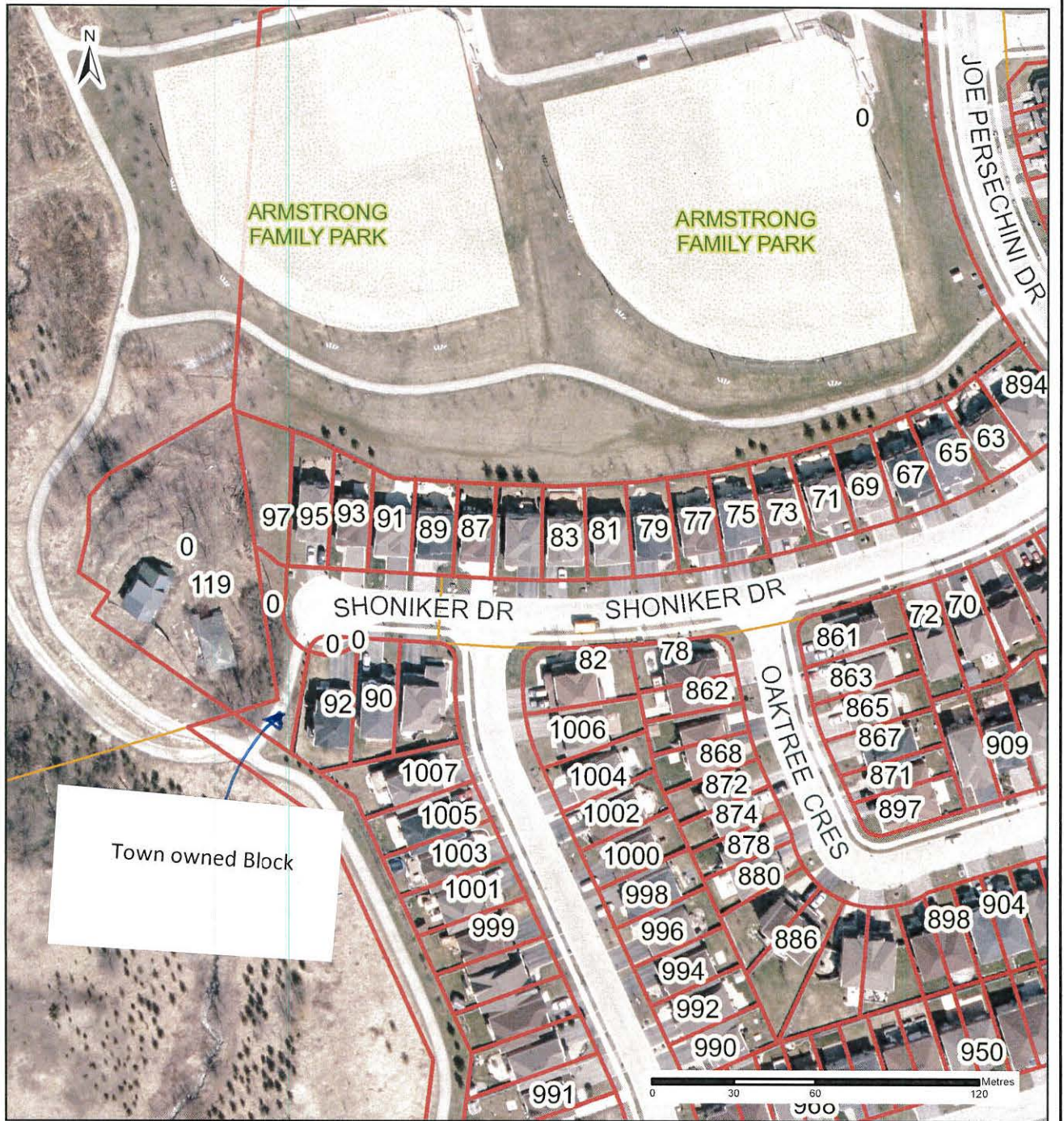
Location Map



Designed & produced by Information Technology - GIS
 User-generated by Staff Online GIS on: 21/10/2014

Legend

-  Subject Lands
-  Railway
-  Land Parcel
-  Municipal Boundary



SOURCES: 2013 Colour Ortho Imagery - First Base Solutions Inc., 2013 Orthophotography; Land Parcel Boundaries - © Teranet Inc. and its suppliers. All rights reserved. NOT A PLAN OF SURVEY. 2014; Roads, Railway, Water Features - Geomatics Division ©2014 The Regional Municipality of York. All other data - Town of Newmarket, 2014. DISCLAIMER: This mapping is based on the POLARIS parcel fabric product compiled using Land Registry System records and recent surveys and control points where available. This mapping is a representation of the earth's surface and provides estimates of area and distance. The information depicted on this map has been compiled from various sources. While every effort has been made to accurately depict the information, data/mapping errors may exist. This map has been produced for illustrative purposes only. IT IS NOT A SUBSTITUTE FOR A LEGAL SURVEY.